



# Esri Transportation eBrief



## Plan and Deliver Strategic Infrastructure Investments

We've created an ebook that walks you through how Esri provides the GIS technology and geographic thinking that allow you to address existing and new infrastructure in your communities.

[Download Now](#)

Share:   



## Transportation Funding Alert

The Multimodal Projects Discretionary Grant is available for cities, towns, and villages whose transportation projects will consider equity, resiliency, and economic impact, among other factors. Explore Esri's transportation funding resource site to see how you can use GIS to achieve the objectives behind this funding opportunity.

**Application deadline is May 23, 2022.**

[Learn More](#)

---



## GIS Allows Colorado Department of Transportation to Capture the Full Value of Its Properties

Bringing right-of-way data into a GIS environment allowed Colorado Department of Transportation (CDOT) to maximize the performance and potential of its real estate assets.

[Launch the Article](#)

---



### Geospatially Enabled BIM Data Proves Useful beyond Construction

After becoming an early adopter of Esri's new ArcGIS GeoBIM on another project, leaders at HNTB realized that the solution could be used to quickly connect geospatial and building information



### Infotech Partners with Cultivate Geospatial Solutions to Develop GIS Capabilities That Eliminate Gaps in Digital Project Delivery Data Life Cycle

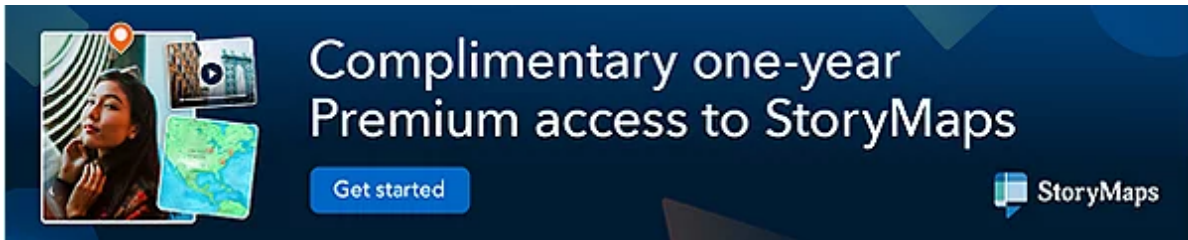
Infotech, a leader in infrastructure construction software solutions,

modeling (BIM) data on the Walk Bridge project.

[Learn More →](#)

announced a partnership with Cultivate Geospatial Solutions (CGS) to enhance the incorporation of GIS across Infotech software to track digital as-built data.

[Read More →](#)

A promotional banner for StoryMaps. On the left, there is a collage of images including a woman looking at a screen, a map, and a video player. The main text reads "Complimentary one-year Premium access to StoryMaps". Below this text is a blue button that says "Get started". In the bottom right corner, there is the StoryMaps logo, which consists of a blue square with a white map icon and the text "StoryMaps".

Complimentary one-year Premium access to StoryMaps

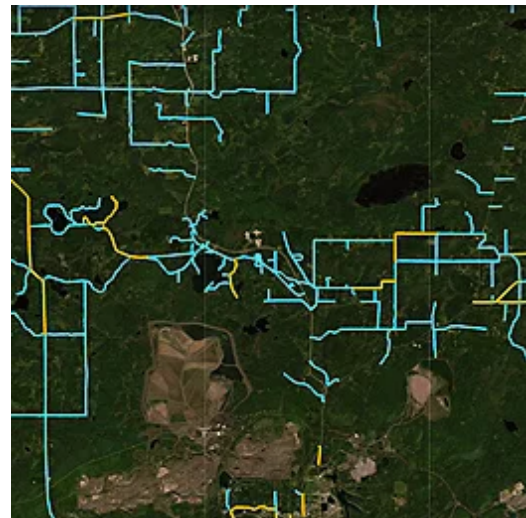
Get started

StoryMaps

## Saint Louis County, Minnesota, Saves over \$200,000 in Keeping Roads Clean with GIS

Saint Louis County, in northern Minnesota, manages an estimated 2,000 miles of roadways and relies on volunteer organizations to assist in the roadways' maintenance. The county turned to a GIS solution that saved the county over \$200,000 in annual labor costs.

[Check It Out →](#)



---

## Increasing Cape Cod's Charging Capabilities

Although most electric vehicle (EV) drivers rely on home chargers as their primary power source, access to public chargers is essential for EV drivers' mobility. Cape Cod Commission's EV charging station analysis is a valuable resource for local communities to use to determine which areas are ideal to support EV infrastructure.



[Learn More →](#)

# Rethink Your Transportation Infrastructure Investments

Launch our new federal funding resources



[Esri.com](#) | [Privacy](#) | [Contact Us](#)  
Copyright © 2022 Esri. All rights reserved.  
Esri, 380 New York Street, Redlands, CA 92373, USA.

