



Esri Transportation eBrief



Transportation in the US after COVID-19

Good asset management depends on knowing the location and condition of your assets. The same holds true with understanding where we need to restore existing infrastructure and make new investments. Learn how transportation in the US will change amid the COVID-19 pandemic.

[See More](#)



Managing over 120 Miles of Traffic Signal Fiber-Optic Infrastructure

Smith Seckman Reid, Inc., an Esri Bronze partner, and City of Memphis staff work together using ArcGIS technology to consistently update fiber-optic lines throughout the city. This information, in return, streamlines construction activities as they know where to excavate without causing damage to the fiber-optic cable system.

[Learn More](#)



San Diego Metropolitan Transit System Leverages Lidar and GIS Technologies for Long-Term Growth

The San Diego Metropolitan Transit System (MTS) created a robust asset management system using lidar, ArcGIS Online, and Esri Maps for SAP BusinessObjects, gaining a full picture of its railways and business outcomes.

[Explore Now](#)

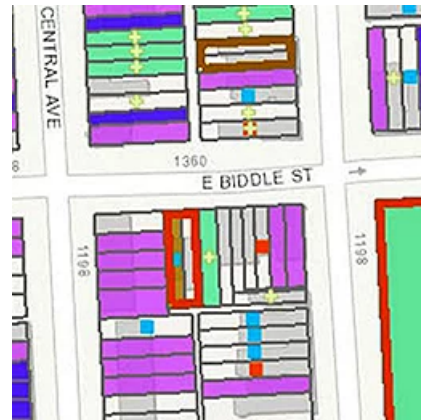
New Podcast from Harvard
School of Public Policy

Each episode of Data-Smart City Pod will highlight a government that has achieved public policy success with GIS.

Listen Now →



City of Baltimore Leads with Place-Based Housing Interventions



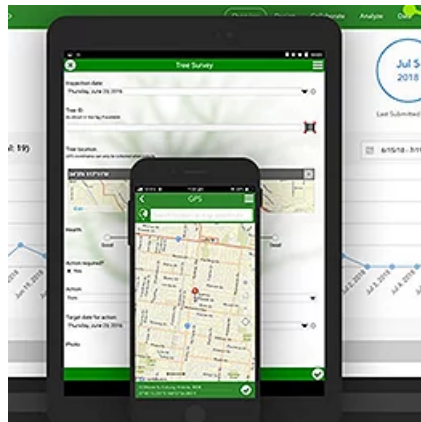
City officials have moved toward a place-based intervention model to address housing issues by surfacing data about each neighborhood and prioritizing actions for measurable outcomes.

See More →

How ArcGIS Survey123 Helped Massachusetts DCR Improve Inspection Efficiency by 50 Percent

The Massachusetts Department of Conservation & Recreation's (DCR) Division of Water Supply Protection inspects and monitors about 150 watershed reservation restrictions every

Tap in to Learn How Location Intelligence to Boost Response Rates



few years. With ArcGIS Survey123, they cut the time it takes to complete the workflow in half.

[Watch Video→](#)

Is your information up-to-date?

[Update Your Info](#)



[Esri.com](#) | [Privacy](#) | [Contact Us](#)
Copyright © 2021 Esri. All rights reserved.
Esri, 380 New York Street, Redlands, CA 92373, USA.

