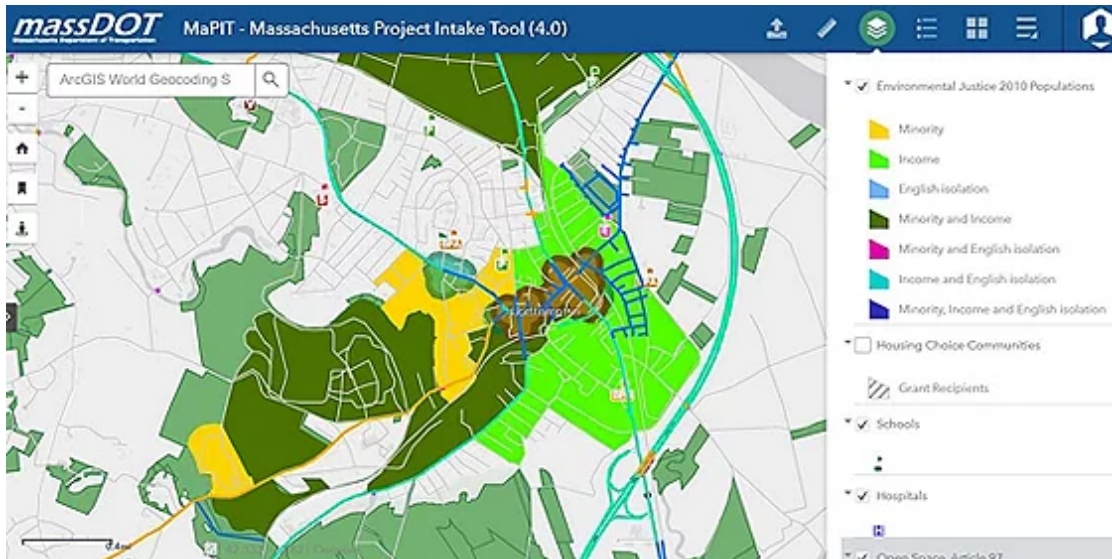




Esri Transportation eBrief

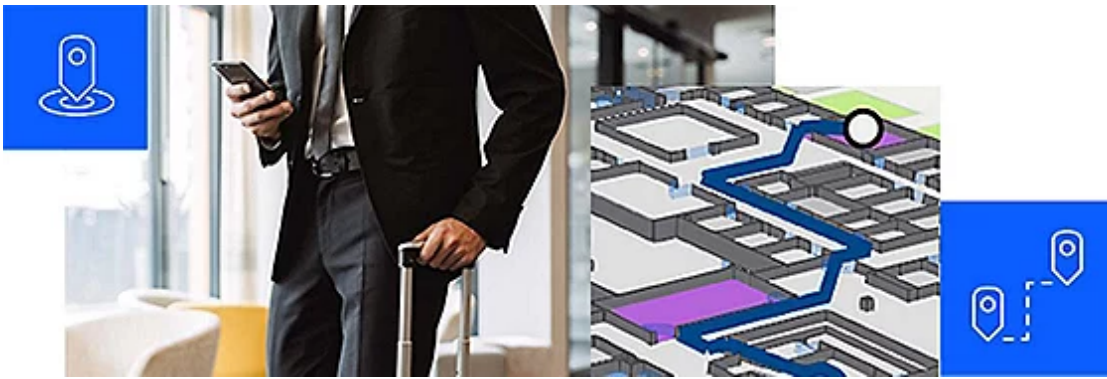


MassDOT's GIS App Delivers Efficiency, Collaboration on Infrastructure Project Budgeting

For capital projects, the work of making strategic project selection and budgeting decisions becomes a complex task. Learn how the Massachusetts Department of Transportation (MassDOT) used GIS to address this multifaceted issue.

[See More](#)

Share:   



Facilities Management Gets a Boost with Indoor Mapping

Facilities managers can benefit from operations dashboards, integrating indoor mapping with systems of record such as accounting, space planning, and materials management to operate in real time.

[Learn More](#)



Dashboard Tells the Story of Northeastern Illinois' Transit Recovery

With conditions on the ground changing so rapidly during the pandemic, the Regional Transportation Authority (RTA) needed a more timely, efficient, and streamlined way to gather information, analyze it, and communicate it to stakeholders.

[Explore Now](#)

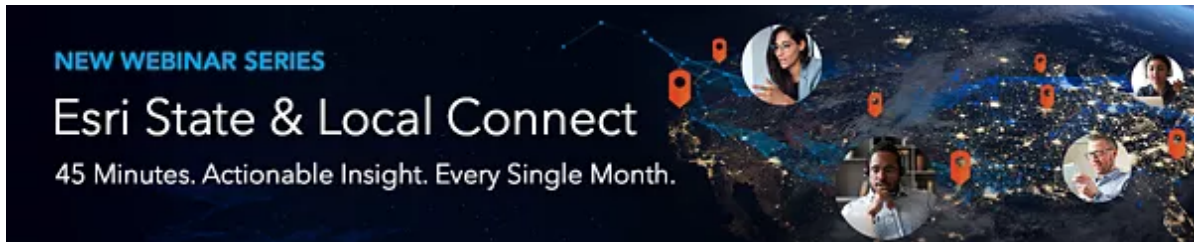
Data-Smart City Pod: Episode Ten—Equity Is Everyone's Work

Hear how Asheville, North Carolina, is using data and GIS to further racial equity



in the city and correct historical, systemic racism. The presenters also talk about equitable asset management.

[Listen Now →](#)



New Racial Equity and Social Justice Ebook



Explore real-world examples of how GIS is helping governments advance racial equity by mapping and analyzing inequities, engaging communities, promoting best practices, and managing the performance of their initiatives.

[Explore the Ebook →](#)

Explore the 101 Ways You Can Participate in GIS Day (November 17)



GIS Day is the international celebration of the GIS profession and GIS technology. Check out this list that has 101 ideas for how you can participate and inspire others to discover and use GIS.

[See the 101 Ways →](#)

BUILDING A SMARTER COMMUNITY

GIS FOR STATE & LOCAL GOVERNMENT



[Esri.com](#) | [Privacy](#) | [Contact Us](#)
Copyright © 2021 Esri. All rights reserved.
Esri, 380 New York Street, Redlands, CA 92373, USA.

